

Survey of part of S. E. 1/4 Sec. 16. T. 6. N. R. 2. W. for John Douglass.

June 22- 1893

H. D. Peterson } chain men.  
Thomas Laws }

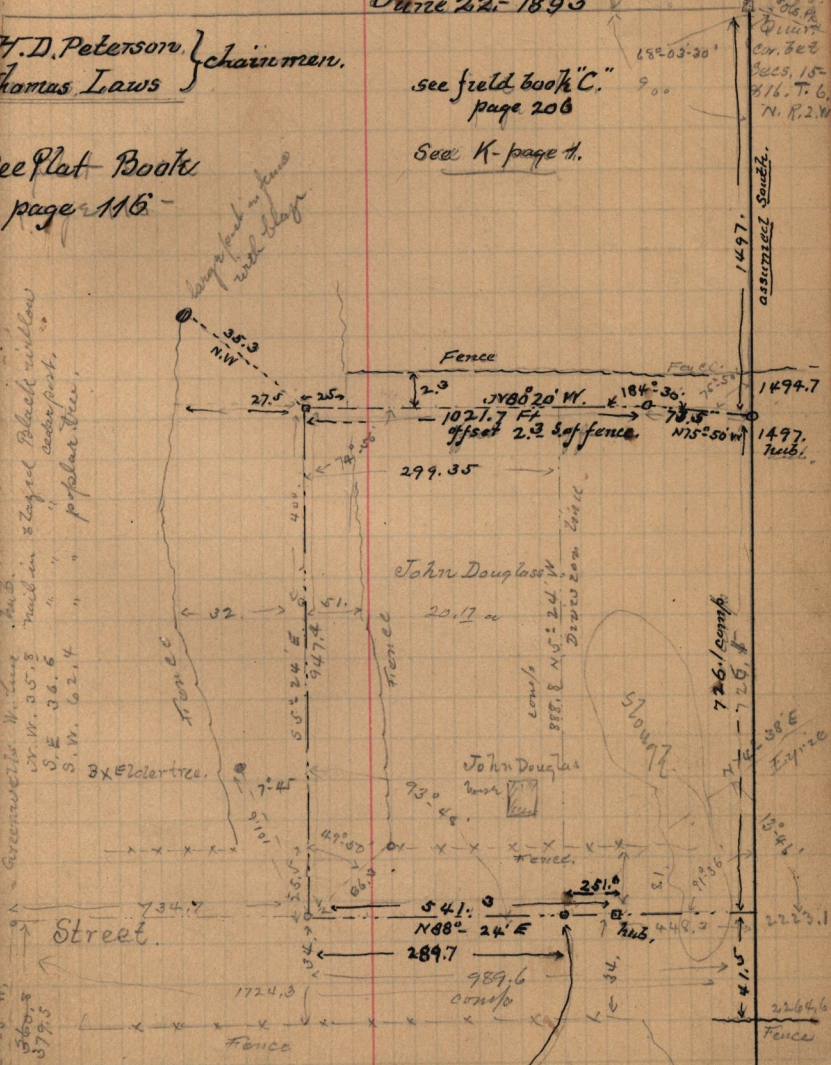
see field book "C."  
page 206

See K- page 4.

See Plat Books  
page 116.

Greenwell to W. Line  
S. W. 35.3  
S. E. 36.6  
S. W. 62.4  
3 x E. 21 trees.

long post in fence  
with flag



Cor. Sec. 15-  
S16. T. 6.  
N. R. 2. W.

assumed South.

90.00  
35° 38' 30"

15° 03' 30"  
9.00

570  
726.1 comp  
710 - 720  
13° 45'

NW 59.4 to large post.  
NW 69.0 to S.E. Cor Brick Stave  
N 17.0 to fence E & W.